

SY NAVILUX

LOA 37,30 m; 6 guest cabins (5 double, 1 twin); 12 guests; crew of 8, built: 2011/2012



SPECIFICATIONS

LENGTH	124 ft 21 in (37.3m)	BEAM	27ft 64 in (8.3m)	ENGINES	2x Doosan 265 kW/360 KS
DRAFT	11 ft (3.3m)	TYPE	Sail yacht	SAIL AREA	530 m ²
YEAR BUILT	2011	FLAG	Croatia	CREW	Captain, engineer, chef, chief hostess, hostess, steward, 2 sailors,

FEATURES

- CD library
- DVD library
- Stereo system
- Fishing equipment
- iPod Dock
- DVD player
- Local television
- Air bed
- Playstation
- Adult waterskis
- Dinghy: RIB / 16ft 8in (5.1m) / 70HP
- Towing ring
- 1 waverunner
- Diving Equipment (amateur)

DECK & SYSTEMS

- Air-conditioned: Fully
- Deck shower
- Barbeque
- Voltage: 220/24
- Swim platform
- Jacuzzi on deck
- SATCOM
- Cell phone
- WiFi Internet

SY NAVILUX

LOA 37,30 m; 6 guest cabins (5 double, 1 twin); 12 guests; crew of 8, built: 2011/2012



SY NAVILUX

LOA 37,30 m; 6 guest cabins (5 double, 1 twin); 12 guests; crew of 8, built: 2011/2012



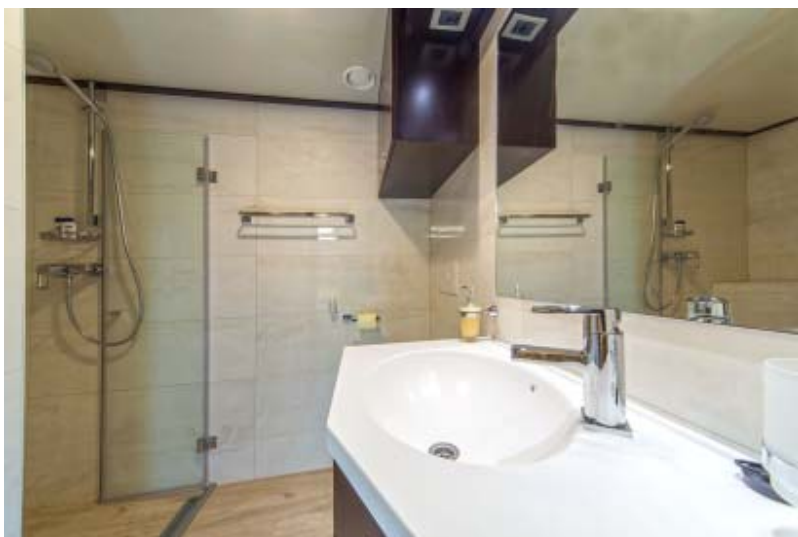
SY NAVILUX

LOA 37,30 m; 6 guest cabins (5 double, 1 twin); 12 guests; crew of 8, built: 2011/2012



SY NAVILUX

LOA 37,30 m; 6 guest cabins (5 double, 1 twin); 12 guests; crew of 8, built: 2011/2012



SY NAVILUX

LOA 37,30 m; 6 guest cabins (5 double, 1 twin); 12 guests; crew of 8, built: 2011/2012

